

SCHEMATIC DIAGRAM-1

NOTE:

The number which noted at the connectors on the schematic diagram as

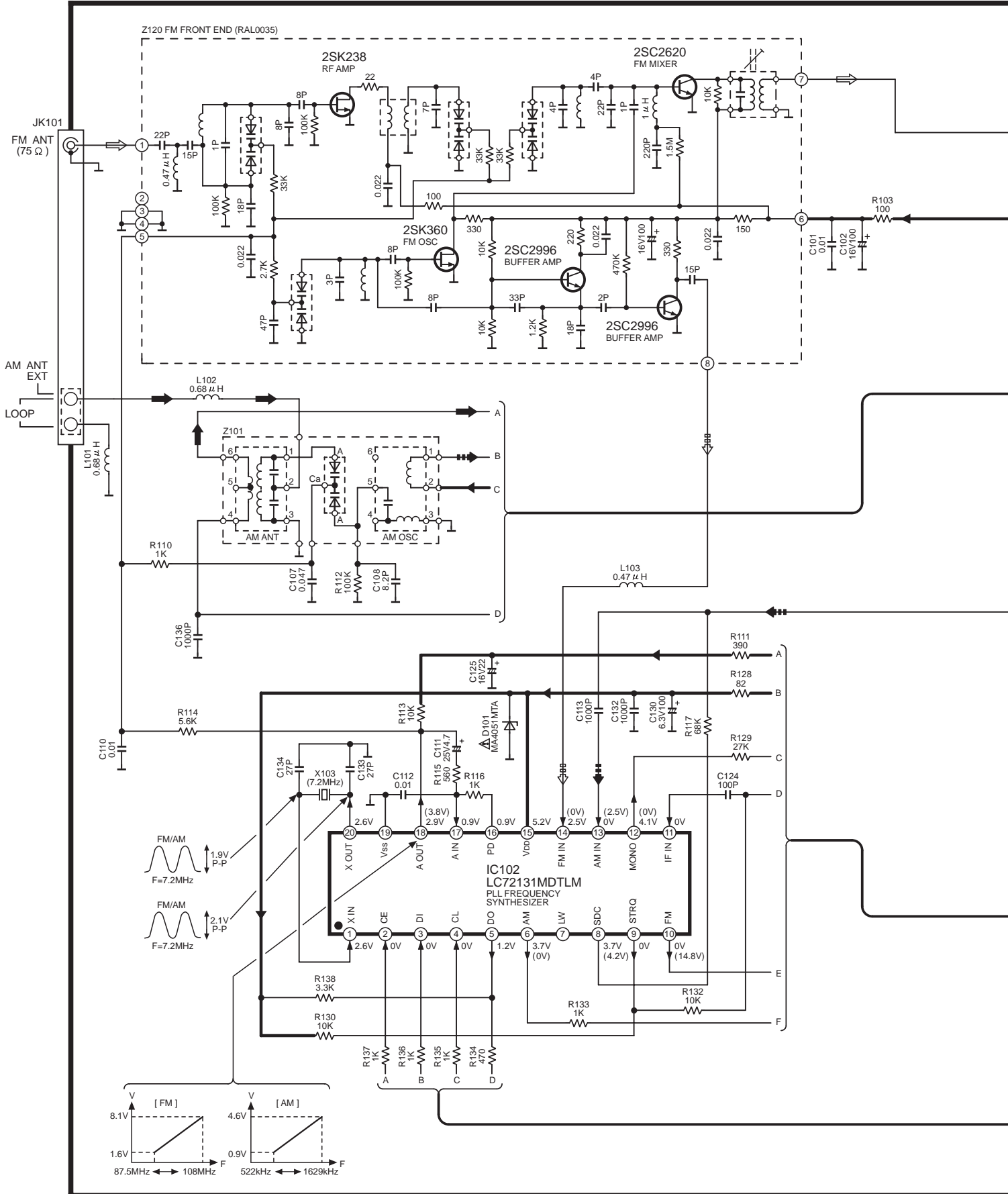
"SCHEMATIC DIAGRAM-1" or "SCHEMATIC DIAGRAM-2"

indicates the schematic diagram serial number located on the left corner in the schematic diagram.

A TUNER CIRCUIT

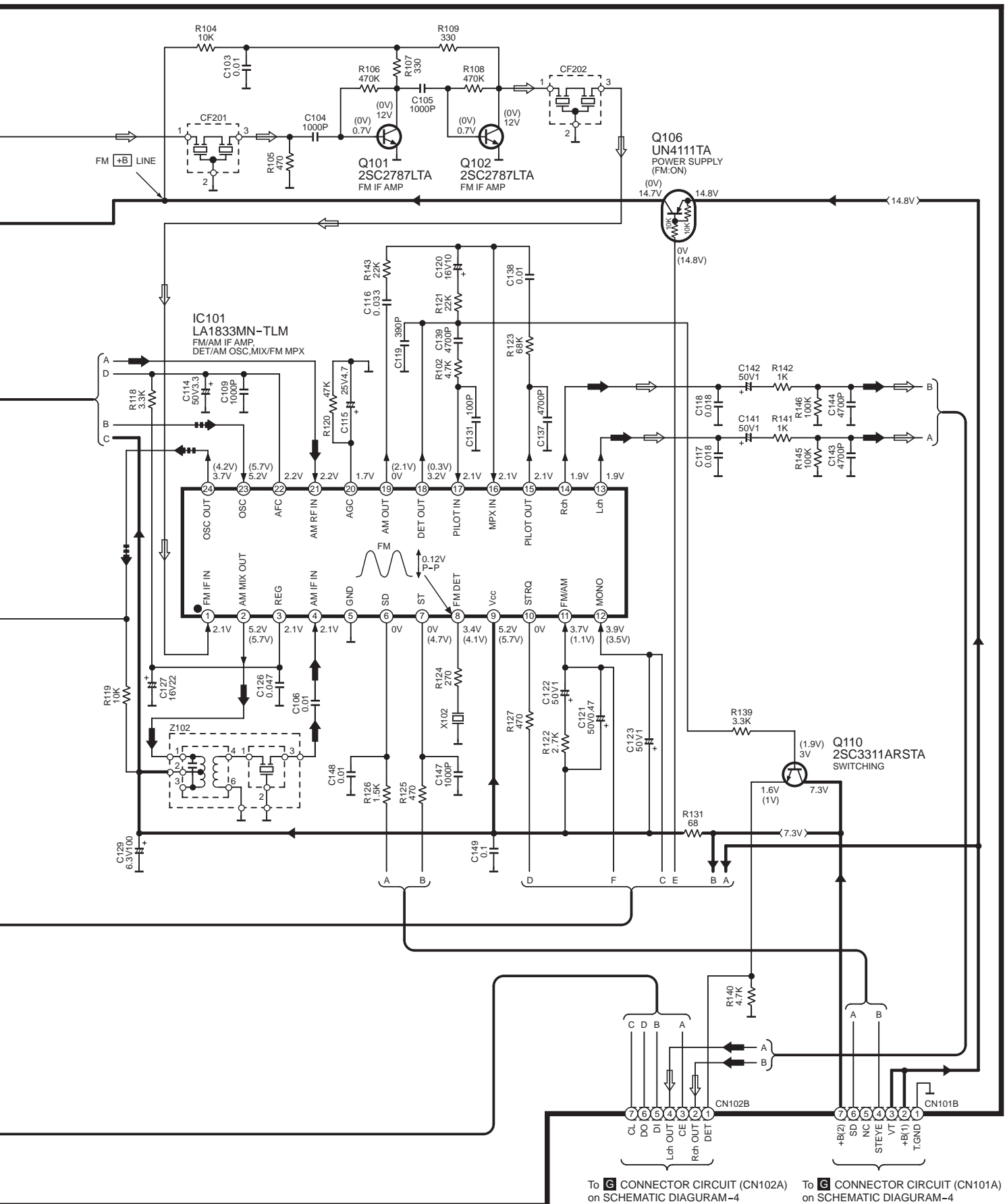
◻◻◻◻ : FM OSC SIGNAL LINE
 ◻◻◻◻ : AM OSC SIGNAL LINE
 ◻◻◻◻ : FM SIGNAL LINE
 ◻◻◻◻ : AM SIGNAL LINE

→ : POSITIVE VOLTAGE LINE



SCHEMATIC DIAGRAM-2

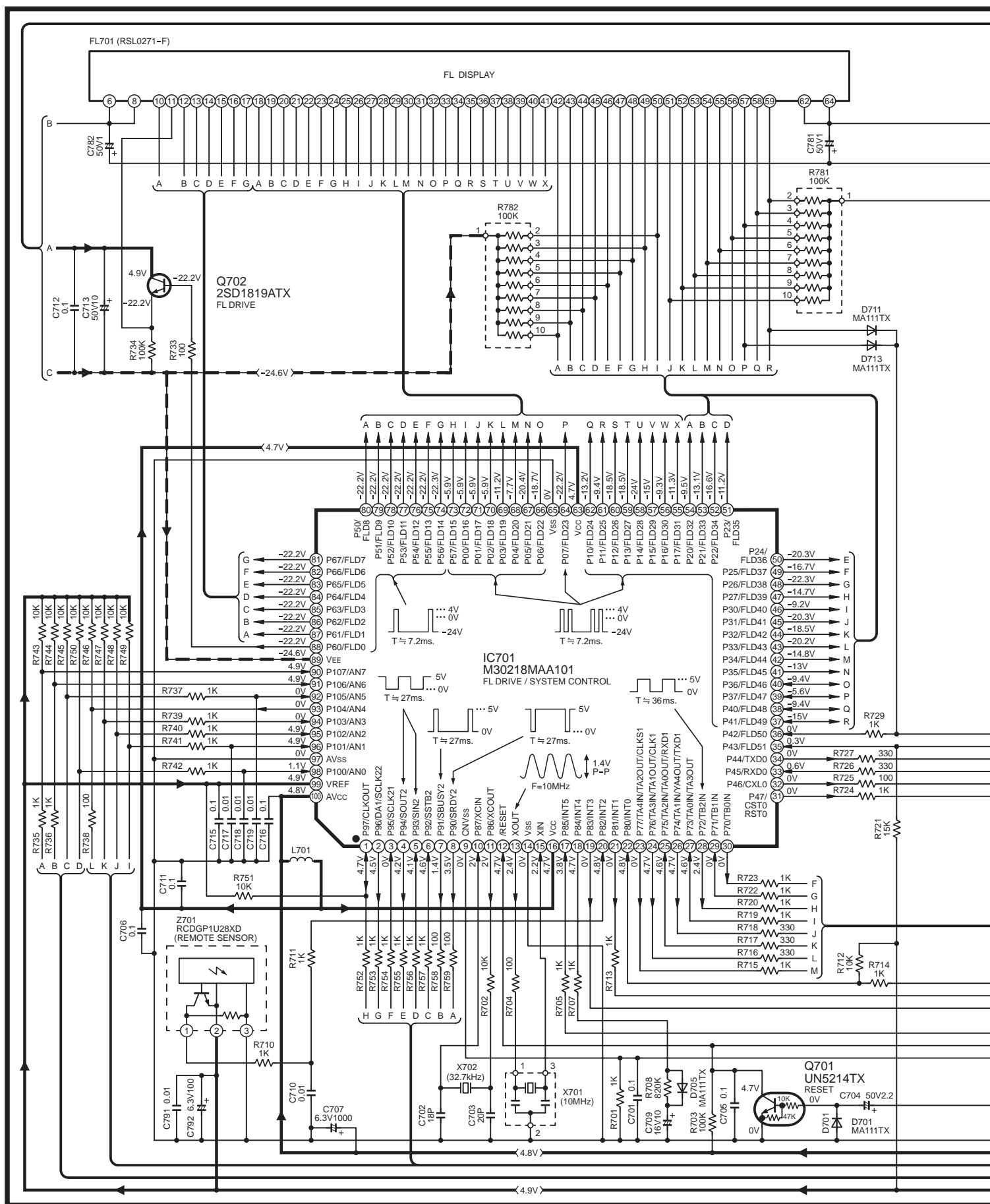
→ : POSITIVE VOLTAGE LINE ⇨ : FM SIGNAL LINE ➡ : AM SIGNAL LINE ⇨⇨ : AM OSC SIGNAL LINE



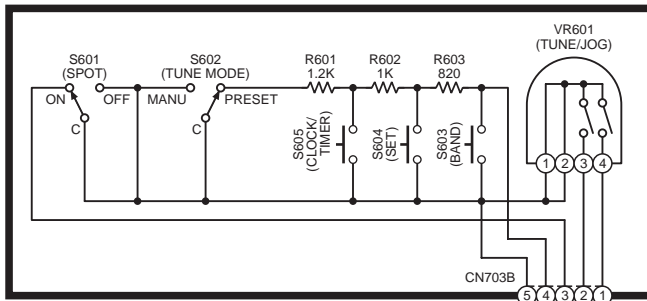
To **G** CONNECTOR CIRCUIT (CN102A) on SCHEMATIC DIAGRAM-4 To **G** CONNECTOR CIRCUIT (CN101A) on SCHEMATIC DIAGRAM-4

B FL CIRCUIT

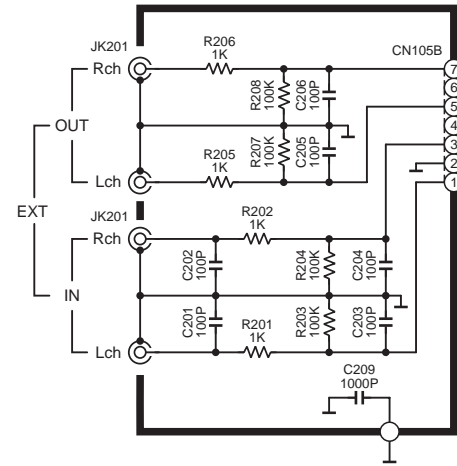
→ : POSITIVE VOLTAGE LINE - → : NEGATIVE VOLTAGE LINE



C OPERATION CIRCUIT

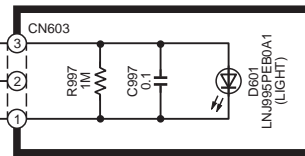


F IN/OUT TERMINAL CIRCUIT

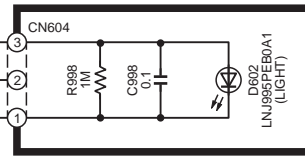


KEEPING TO THE RULE OF UNIT SUPPLY, WE DO NOT SUPPLY SINGLE PARTS.

D LED(L) CIRCUIT

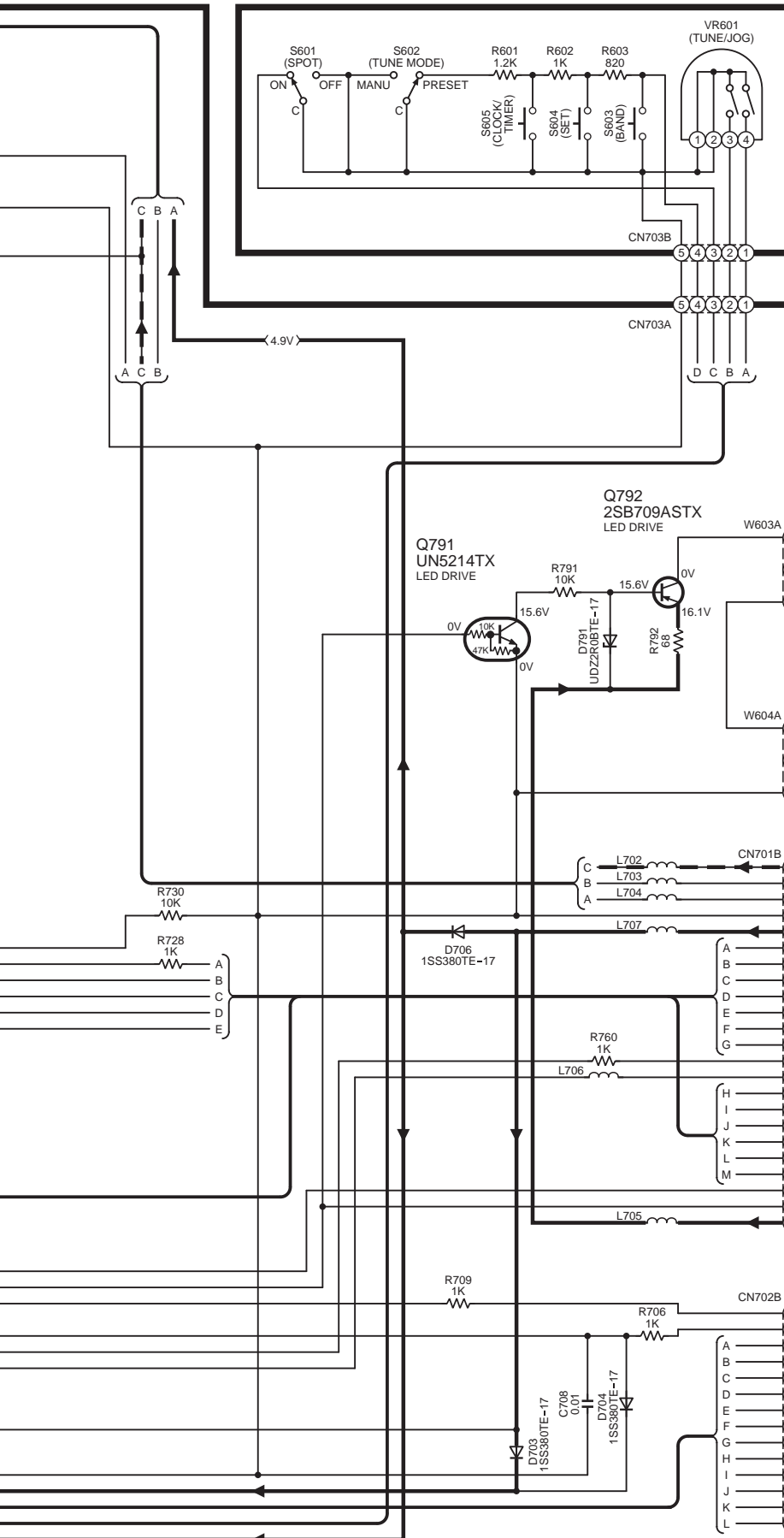
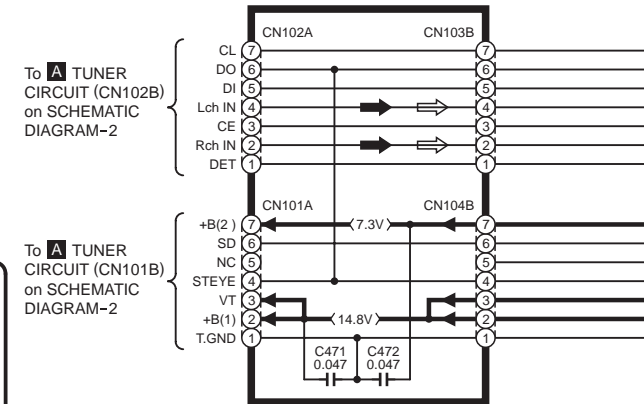


E LED(R) CIRCUIT







- : POSITIVE VOLTAGE LINE
- - - : NEGATIVE VOLTAGE LINE
- ⇄ : FM SIGNAL LINE
- ⇨ : AM SIGNAL LINE

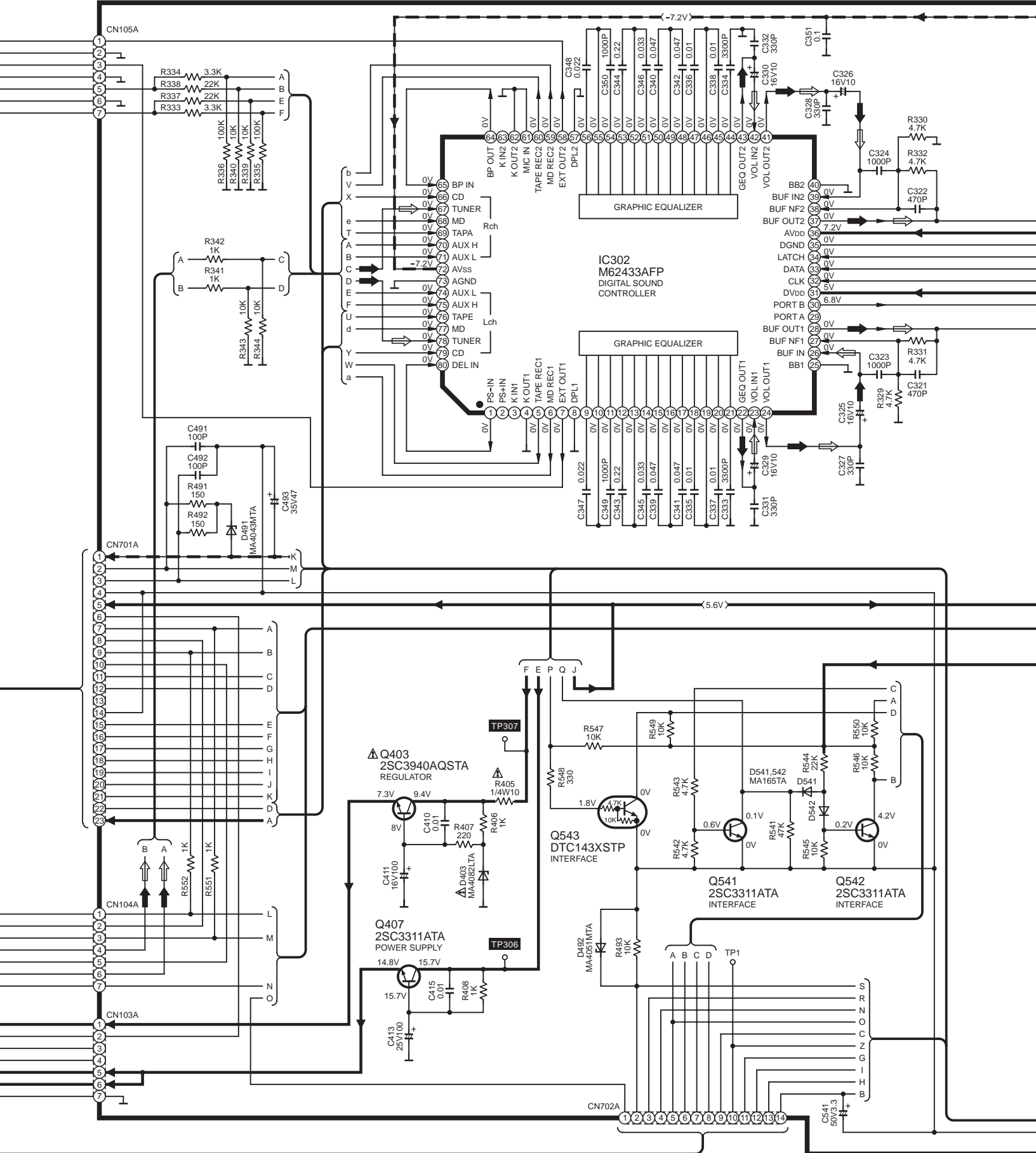
G CONNECTOR CIRCUIT



SCHEMATIC DIAGRAM 5

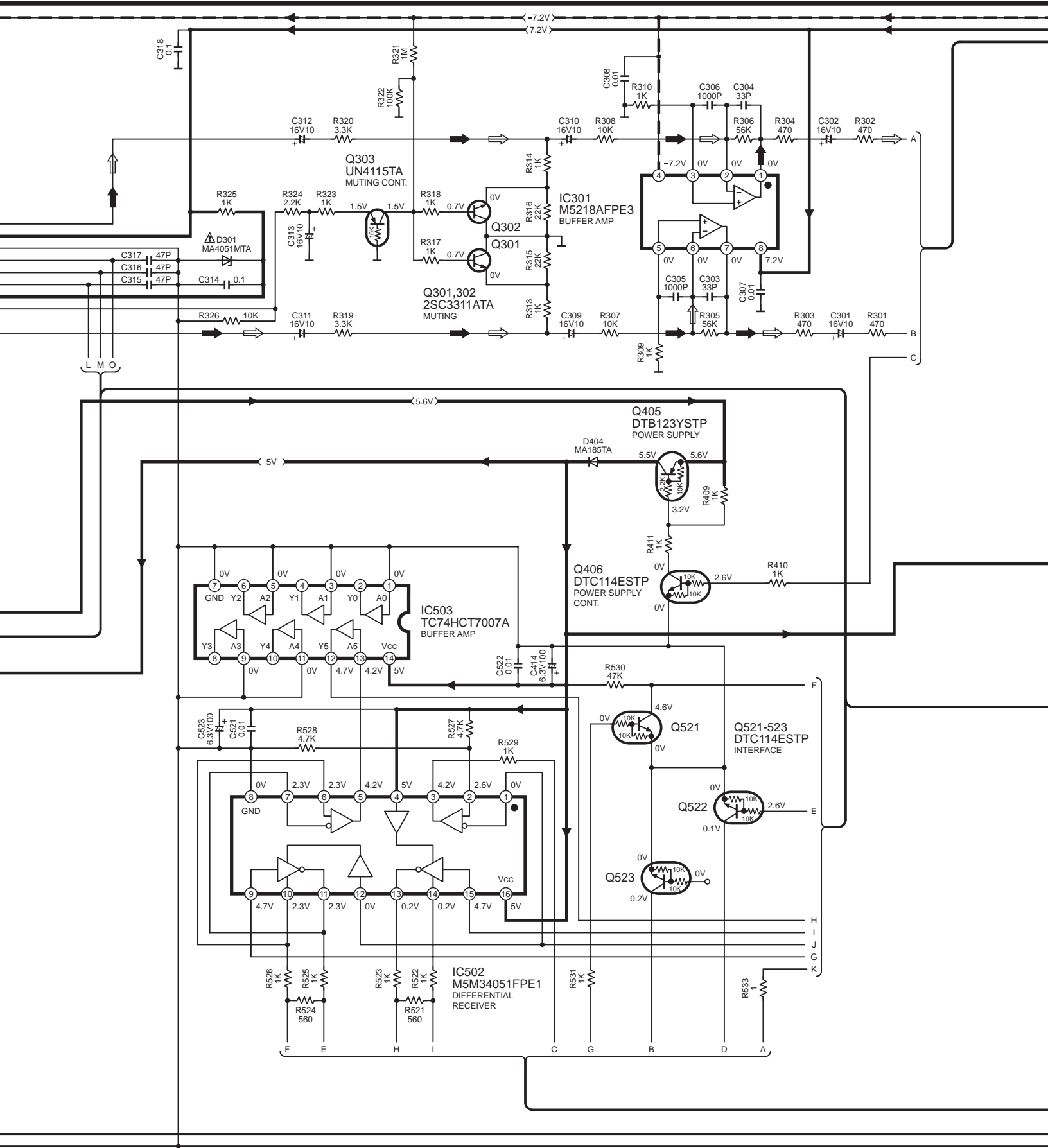
H MAIN CIRCUIT

 : POSITIVE VOLTAGE LINE
 : NEGATIVE VOLTAGE LINE
 : FM SIGNAL LINE
 : AM SIGNAL LINE



SCHEMATIC DIAGRAM-6

- : POSITIVE VOLTAGE LINE
- : FM SIGNAL LINE
- : NEGATIVE VOLTAGE LINE
- : AM SIGNAL LINE



SCHEMATIC DIAGRAM-7

H MAIN CIRCUIT

→ : POSITIVE VOLTAGE LINE ⇨ : FM SIGNAL LINE
 - - - - - : NEGATIVE VOLTAGE LINE ⇨ : AM SIGNAL LINE

